

## EDUCATIONAL STUDENT ACCESS

Complete the [Educational Trial & Student Access form](#). Then, click 'Request Download.' SOLIDWORKS will send your serial number to the email address you listed on the form.

### SOLIDWORKS Education Download Instructions

Download instructions for qualified educators, makers, military, students and sponsored organizations.

Please enter your information in the fields below - all fields required. Please enter accurate information, including email address. Download instructions and licensing serial number will be emailed to the address you provide.

Please refer to DS SOLIDWORKS Corp.'s [privacy policy](#) link below regarding how your data will be used.

English ▼

School License ID, SDK-ID or SEK-ID:

Are you a: --Select-- ▼

First Name:

Last Name:

School Name:

School Type: --Select-- ▼

Major: --Select-- ▼

Before proceeding with the installation, please complete the following:

- Verify your system meets the [system requirements](#) needed to run SOLIDWORKS.
  - ▶ *SOLIDWORKS 2015/2016 Education and Student products are targeted for use on Windows® operating systems. They will not work on Windows XP or Vista.*
  - ▶ Uninstall any alpha, beta or pre-release versions of the SOLIDWORKS software.
  - ▶ Back up all of your SOLIDWORKS design files (e.g. parts, assemblies, drawing, document templates, sheet formats, library features, form tools, and Toolbox parts) prior to upgrading.
- To minimize disk space, please consider uninstalling your older version of SOLIDWORKS products. Then, install the new SOLIDWORKS product (Education Edition users may wish to keep an older version). When uninstalling an older version, make sure to also uninstall any Simulation products, along with older versions of eDrawings®, etc.
- If you wish to move your unexpired license to a new computer, please transfer your license before uninstalling the software. This can be completed as follows:
  - ▶ Start SOLIDWORKS > go to the help menu > Transfer Licenses (select all the SOLIDWORKS products when doing this).

# INSTALLATION

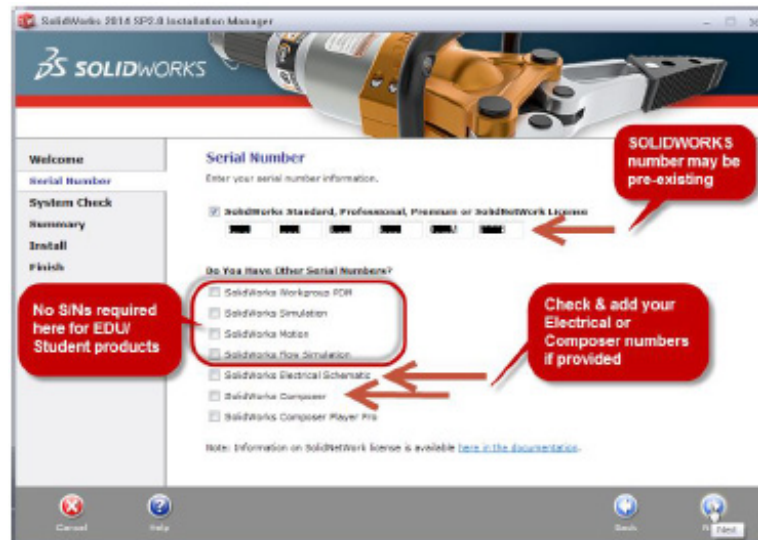
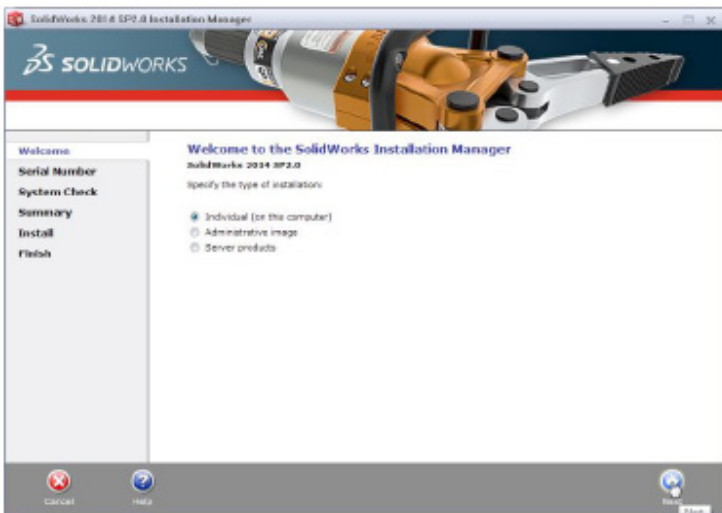
**Note:** Before beginning the installation, upgrade or add-in products installation process, please be sure to close out of all SOLIDWORKS programs currently open on your computer.

Locate your Serial Number(s) (located on your product package or email from DS-SOLIDWORKS/ school). If you cannot find or you have misplaced your number, contact GSC to obtain one.

- SOLIDWORKS Education Edition, the number typically begins with 9700 (Stand Alone) or 9710 (Network)
  - ▶ For Network Licenses installation instructions are here.
- SOLIDWORKS Student Engineering Kit (SEK) products: 9020
  - ▶ Note: Separate Serial Numbers are required for CAD, Electrical and Composer products.
  - ▶ SOLIDWORKS Student Edition: 9020
  - ▶ SOLIDWORKS Student Design Kit: 9020

**1** Insert DVD (or select “setup.exe” from your download package). The “Welcome to the SOLIDWORKS Installation Manager” window will appear; make sure **Individual (on this computer)** is selected. Select Next.

**2** Enter your 24 digit serial number(s). Select Next.  
*Note: After selecting “Next,” a screen will appear as the program accesses the Internet to confirm the serial number.*



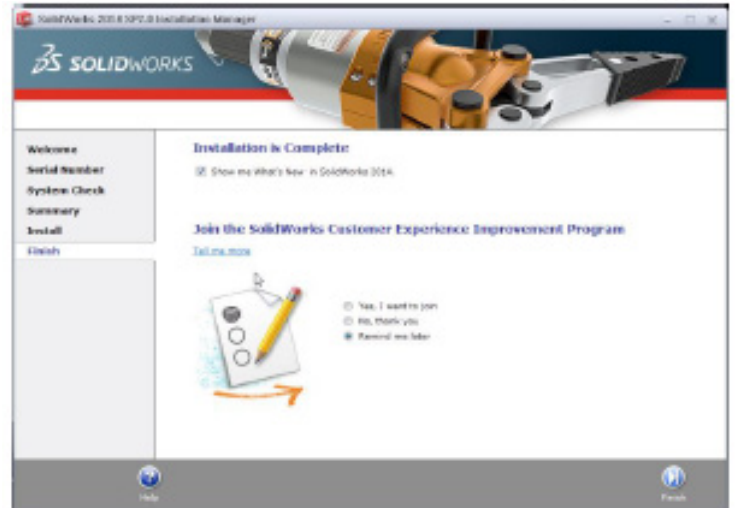
**3** Once the serial number has been confirmed, a summary page will appear. It will display the products that will be installed, as well as the install location. We recommend not changing this location. Select **Install Now** to continue.

**4** Installation is Complete! Make a selection regarding the SOLIDWORKS Customer Experience Program (we recommend participating, as the usage data help us in development), then select **Finish**.

**5** You can now run your SOLIDWORKS EDUCATION/STUDENT product, you will be asked to activate you license within 30 days of first use.

**6** When your install is complete, you may be prompted to check your Graphics Card Driver. SOLIDWORKS makes it easy to do via its [Hardware & System Requirements webpage](#) > [Graphics Card Drivers](#).

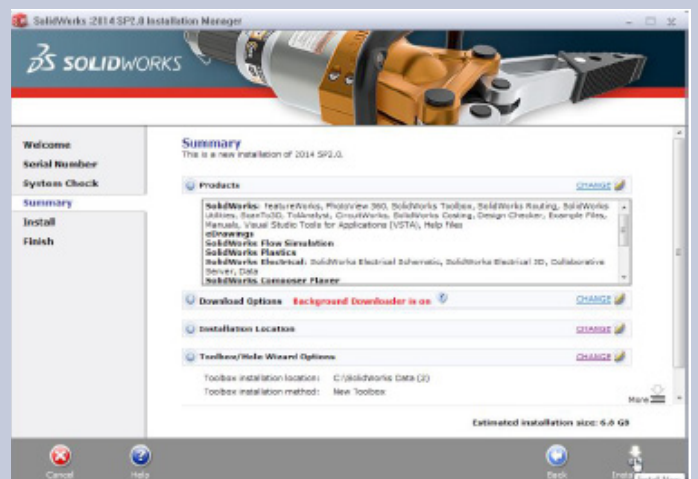
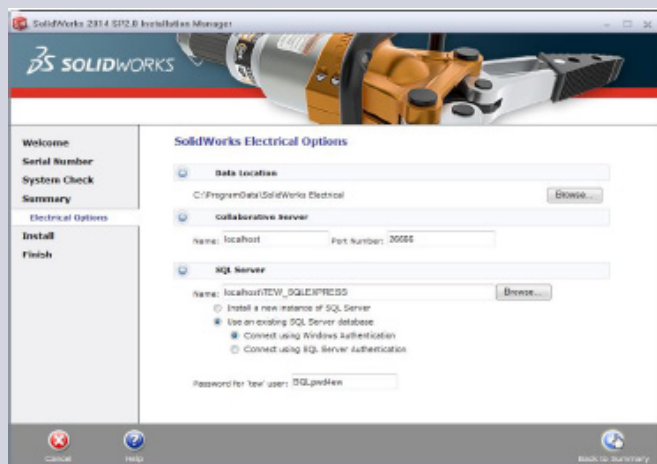
**7** If further assistance is required, please complete and submit the [SOLIDWORKS online Student Request Form](#).



## OPTIONAL

If you have purchased a license for a SOLIDWORKS Electrical products and have entered a serial number (there are separate serial numbers for certain student products only), you will also see the following information (default selections shown).

Expand the “Electrical Options” as desired to check values and settings (default values are shown below).



Click “Return to Summary” then select “Next” to start the installation.

